

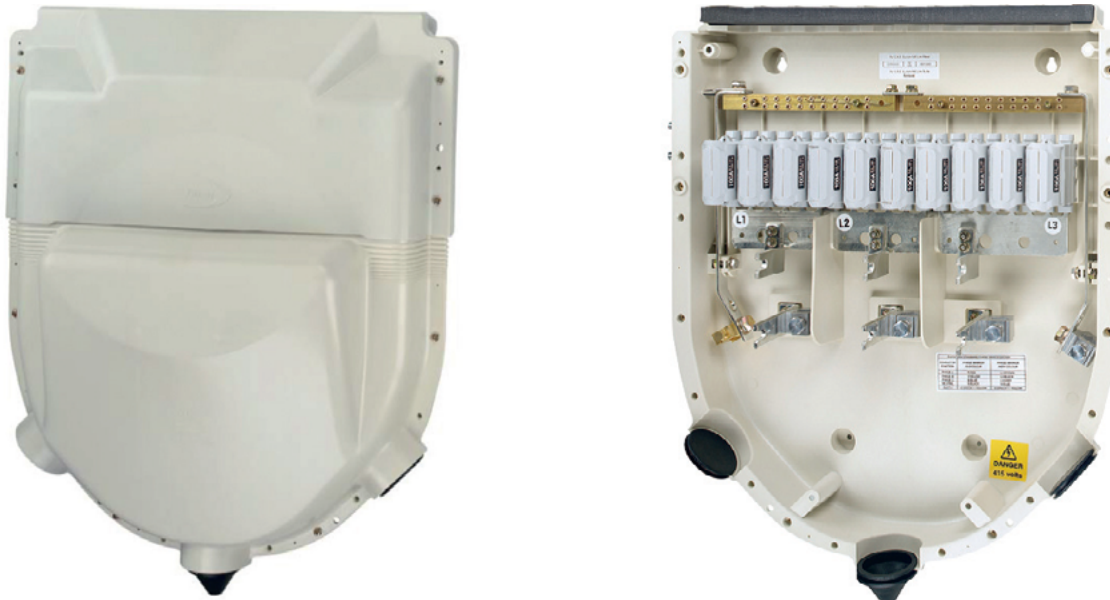
Multi Service Distribution Boards

GFP 10 - 315A rated 10 Way

Horizontal distribution boards for direct connection to supply

Overview and Presentation

All insulated horizontal distribution boards fitted with 10 outgoing 100A rated fuse ways. Suitable for direct connection to supply network via cable lug or mechanical shear-off connectors. For indoor installation only.



Features

- Interlocking upper and lower covers giving access firstly to outgoing ways followed by access to incoming terminal chamber
- Fully rated Neutral and Earth bars
- Incoming terminations via mechanical connectors with shear-off heads for 95mm² to 185mm² section conductors
- Direct connection of supply on to busbars
- Sealing wire facility
- Removable N/E link for use with CNE and SNE systems
- Internal transparent screen over N/E bars and outgoing cables
- 3 position entry for incoming supply cable
- Keyhole fixings on uppermost body attachment points
- Two external M12 earth studs

Note: The equipment described on this data sheet must be installed by suitably qualified personnel according to applicable Local/ National Wiring regulations currently in force.

Low Voltage - Cut Outs

Internal equipment

- Factory fitted with BS 7657 100A rated SP outgoing ways (BS88 30 x 57mm cylindrical cartridge fuses, not supplied)
- Serrated cable bores on 100A outgoing ways accept up to 35mm² solid or stranded conductors

Construction

- Body mouldings.....Glass re-inforced polyamide 6
- Terminal blocks..... Brass
- Transparent terminal shield..... Polycarbonate
- Cable shrouds..... Synthetic nitrile rubber
- L, N and Earth metalwork..... Electro-tin plated copper

Performance data

- Rated voltage..... 415V a.c.
- Busbar rating..... 315A nominal
- Supply frequency..... 50-60Hz
- Rated insulation voltage..... 690V a.c.
- Flammability rating..... V2, self extinguishing 30 seconds at 960°C
- Short circuit withstand current..... 10kA
- Operator protection;
 - In service condition, all covers and fuse carriers in place..... IP3X
 - Outgoing cover removed, shrouds in place..... IP2X
- Recommended N/E terminal torque..... 3.5Nm

Conformity to Standards

- Third party tested to BS EN 60439-1
- Designed to draft ENA Technical Specification for MSDBs
- IP rating according to BS EN 60529
- Outgoing 100A rated fuse ways conform to BS 7657:1993
- RoHS compliant

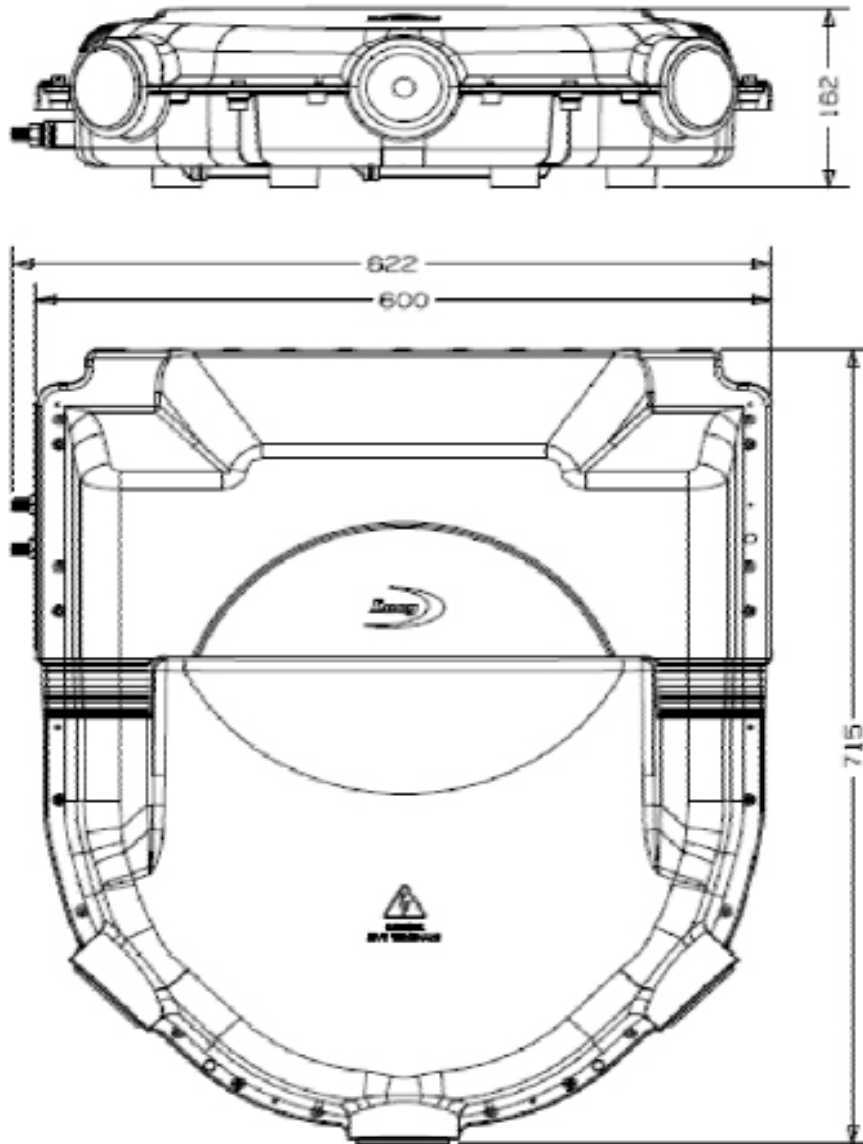
Dimensions

- Enclosure height..... 715mm
- Enclosure width..... 622mm
- Enclosure depth..... 162mm
- Upper fixing centres..... 37cm
- Lower fixing centres..... 18cm
- Spacing between fixing centres..... 50cm

Weight (excluding all fuses)

- Ex works net weight..... 13.8kgs

General arrangement and dimensions



Disclaimer: Lucy Electric has a policy of continuous research and development thus accordingly reserves the right to change the design and specifications of its products without prior notice or liability.



www.lucyelectric.com