

#### Disclaimer

Lucy Electric has a policy of continuous research and development and accordingly reserves the right to change the design and specification of its products without prior notice.

## Lucy Electric worldwide offices

#### Lucy Electric Ltd.

Howland Road, Thame, Oxfordshire,  
OX9 3UJ, United Kingdom  
Tel: +44 1844 267 267 General  
Tel: +44 1844 267 222 Sales  
Fax: +44 1844 267 223  
Email: salesuk@lucyelectric.com

#### Lucy Middle East FZE.

PO Box 17335, Jebel Ali, Dubai,  
United Arab Emirates  
Tel: +97 148 129 999  
Fax: +97 148 129 900  
Email: salesme@lucyelectric.com

#### Lucy Electric (Thailand) Ltd.

388 Exchange Tower, 37th Flr Unit 3702,  
Sukhumvit Road, Klongtoey Sub district,  
Klongtoey District, Bangkok,  
10110, Thailand  
Tel: +66 (02) 663 4290  
Fax: +66 (02) 663 4293  
Email: salesth@lucyelectric.com

#### Lucy Switchgear Arabia Co. Ltd.

Novotel Business Centre,  
P.O. Box 35340, Dammam 31488,  
Saudi Arabia  
Tel: +966 138 147 910  
Fax: +966 138 147 914  
Email: salessa@lucyelectric.com

#### Lucy Electric (South Africa).

Unit 12 & 13, Block C,  
Honeydew Business Park,  
1503 Citrus Street, Laser Park,  
Honeydew, 2170, South Africa  
Tel: +27 11 025 7490  
Fax: +27 11 794 3277  
Email: salesza@lucyelectric.com

#### Postal Address:

P.O. Box 1078, Honeydew, 2040

#### Lucy Asia Pacific Sdn Bhd.

L17-05-06, PJX-HM Shah Tower,  
No16A Jalan Persiaran Barat,  
46050 Petaling Jaya, Selangor, Malaysia  
Tel: +603 74910700  
Fax: +603 79316923  
Email: salesmy@lucyelectric.com

#### Lucy Equipamentos Elétricos Ltda.

Av. das Araucárias 2558  
Thomaz Coelho, CEP 83707-067,  
Araucária Paraná State, Brazil  
Tel: +55 (41) 2106 2801  
Email: salesbrazil@lucyelectric.com

#### Lucy Electric India Private Ltd.

F-10, MIDC, Ambad  
Nasik 422010  
India  
Tel: +91 253 2381603  
Fax: +91 253 2381247  
Email: leindia@lucyelectric.com

engineering intelligent solutions  
[www.lucyelectric.com](http://www.lucyelectric.com)

# House service cut outs



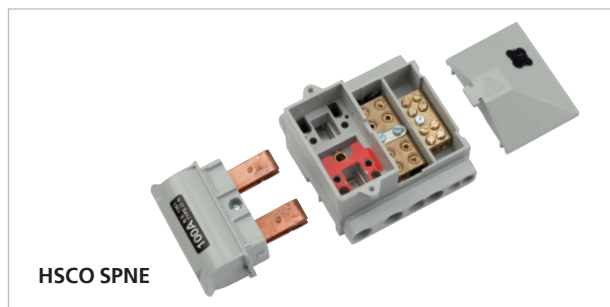
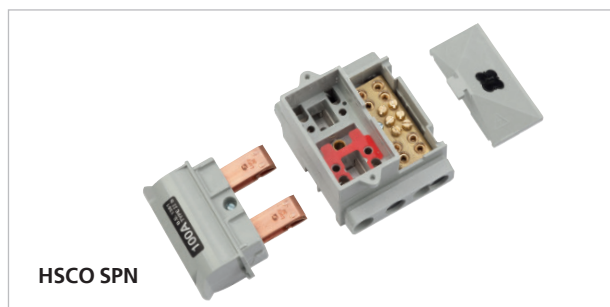
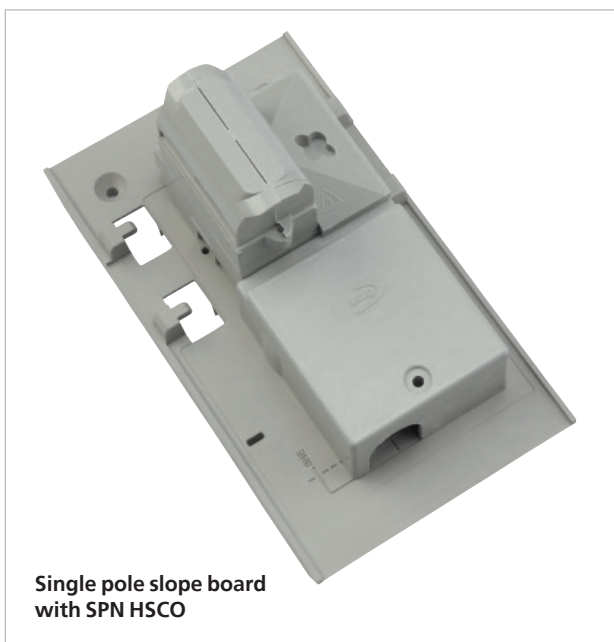
# House service cut outs

**Lucy Electric house service cut outs cater for single and triple pole installations and offer reversible mounting in Combined Neutral and Earth (CNE) or Separate Neutral and Earth (SNE) configurations. A choice of cable protection or sealing chamber accessories provide the required levels of security, whether it is for existing or new installations.**

Designed and tested to BS 7657:2010, the HSCOs are manufactured from tough, impact resistant glass fibre polyester material with heavy duty brass terminals. Variants are offered for 60 / 80A applications with 22mm diameter fuse clips or 100A applications with 30mm diameter clips. Close coupled HSCOs which mate directly to the meter housing are also available to counter instances of theft of supply.

Presented as part of single pole or triple pole kits, flame retardant slope board assemblies more suited to new builds where the service cable runs up the outside of the dwelling as opposed to in the cavity. They still allow full reversibility of the cut outs i.e. with neutral mounted on the left or on the right.

Incorporating an innovative insulated gaiter to protect the live conductor ends, a dedicated derivative allows live cabling during the replacement of cast iron cut outs on PILC cables. The cable chamber lower half has an obround multi entry grommet which is split such that it can easily be slipped around the PILC cable without resetting and potentially damaging the cores and gives a choice of three positions for the cable. Reversibility of the cut out is again easily performed and unused entries in the grommet are blocked off with plugs.



- Full reversibility of all SP and TP units through identical sized incoming and outgoing flanges accepting installations with phase on the left or right hand side
- Internal red tab can be repositioned on top or bottom of unit to identify incoming phase
- Silver plated brass terminals for phase contacts
- Two brass M8 terminal screws with 3mm hexagon head pinching screws (slotted for Earth) for all phase and neutral terminations
- Dual Phase and Neutral terminals with 35mm<sup>2</sup> conductor capacity
- Serrated terminal bores to ensure optimum conductivity and conductor retention
- Interlocked mouldings preventing access to live components whilst tamper proof seals are in place
- Blanking plugs for unused terminal ways
- Insulated busbar extension accessory available
- Two lugs for wire sealing of fuse handle
- Full range of cable housing accessories available
- SWA / AWA glanding kit can be fitted to cable chambers

### Connection accessories

- SPNE and TPNE cable covers
- SP and TP cable sealing chambers
- Anti-tamper brass tab accessory prevents access to protection chamber fixing screws

