

Disconnecter Services



Why Lucy Electric?

Lucy Electric's range of high and medium voltage switch disconnectors include pole or structure mounted air break disconnectors and air and gas load break switches.

These switch disconnectors provide best-in-class solutions and are designed to anticipate the evolving technical and market demands of our customers.

Our disconnector products include Rapier AX, GX and Double Side Breaker Disconnector Ranges as well as isolating links and drop out fuses. Many come as either manual or automatically operated options.

Lucy Electric are proud to support products both new and installed with a wide range of services from initial design through to end of life cycle asset replacement.

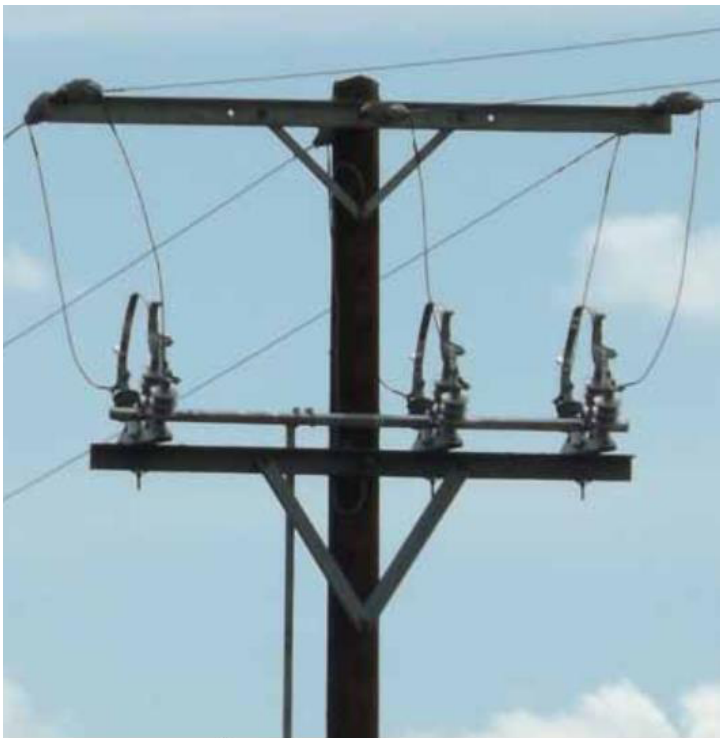
Lucy Electric employs a number of engineers with the skillsets and knowledge to provide total support throughout the life cycle of our customer's assets.

Installation and commissioning services

The installation and commissioning phase of any asset is a critical activity in ensuring that the asset is reliable for its life cycle.

As part of our installation services, our teams engage with the customer's design team at the early stages and offer a solution. Once the design is agreed, Lucy Electric can undertake the installation and commissioning of the asset and bring it into service.






Maintenance and support services

Lucy Electric's Energy Services team are equipped to ensure that your assets are inspected and maintained to ensure safety, reliability and a high performance.

Our skilled service team offer a number of services on site, to include;

- Asset maintenance
- Modifications and upgrades
- Condition assessments
- Spare parts
- Technical support
- Asset replacement
- Training services

If you wish to know more or you need a survey to discuss our services, please contact our  Energy services team;

Lucy Electric Ltd.

Howland Road, Thame, Oxfordshire,
OX9 3UJ, United Kingdom

Tel: +44 1844 267 267 General

Tel: +44 1844 267 222 Sales

Fax: +44 1844 267 223

Email: energyservices@lucyelectric.com

www.lucyelectric.com